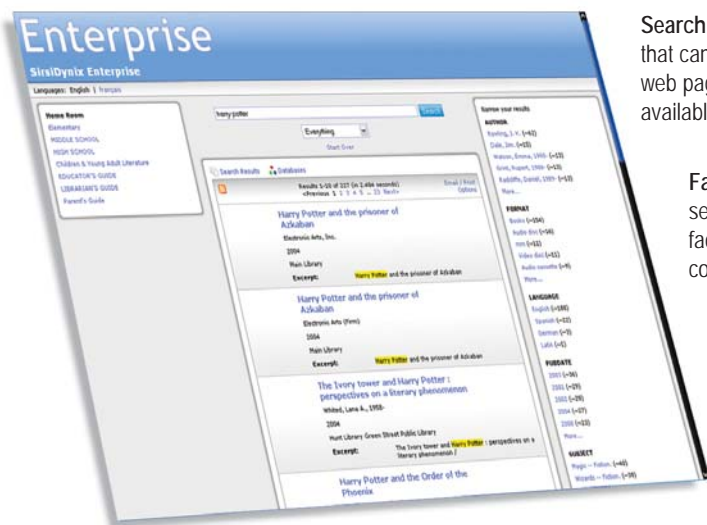


SirsiDynix® Enterprise™ is a modern search and discovery tool that empowers libraries to make their collections and external resources more accessible than ever before. Capitalizing on the industry's first fuzzy logic search technology, Enterprise delivers leading-edge faceted search capabilities, simplified search interfaces, guided discovery, and much more. Enterprise is an easy add-on to current SirsiDynix OPACs. e-Library, iBistro, iLink, and HIP sites can now provide an exciting new user experience with minimal new investment.



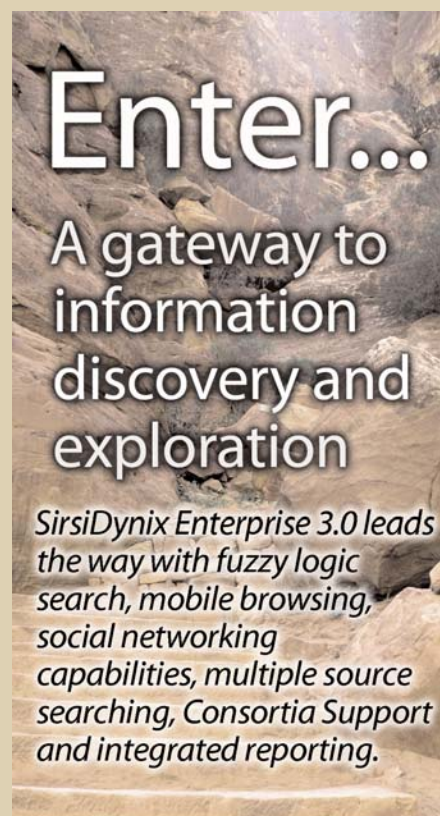
Search Widget provides a “code snippet” that can easily be added to any existing web page making an Enterprise search available anywhere!

Facet Stacking narrows your search results by a particular facet of information such as: author, content type, and holding library.

Fuzzy matching for core relevance returns only the results that are relevant. The library even has the ability to configure the level of relevancy. Fuzzy logic for powerful search results presents relevant search results even for misspelled or partial term queries, with exact matches given the highest relevancy rankings.

## Enterprise Search Highlights

- **Friendly, URL-based Searching** supports use of the Back button on web browsers as part of the search process and building “saved searches.” Users can copy and paste the URL address into a new browser window and get the exact same search results.
- **Dynamic Search Suggestions** are retrieved based on past successful searches when the user types in keywords.
- **User Ratings and Reviews** encourage users to interact with each other and the library to share ratings and reviews.
- **Harvested Searching** retrieves results for users based on the most relevant content regardless of what type of information it is – library catalog, websites, PDFs, external databases, and more. Best of all, the data will appear in the hit list with relevancy ranking for all content types.
- **Built-in Library Favorites** indexes library-selected websites so that external search results can be presented within the catalog.
- **Federated Searching** allows users to search the library databases and other library catalogs using Z39.50, 360 Search, and MUSE Search.
- **Discovery Aids** display information about the search results in categories, such as location, format, author, subject, publication date, and language. Users can easily narrow results using options that are actually in the result set – taking the guesswork out of refining search results and eliminating “dead-ends.”
- **“Did you mean...”** suggestions are based on terms in the catalog rather than a generic dictionary.
- **Bib Detail Display** functionality allows the library to have more control over what appears on the detailed display, tailoring it to the user's needs.
- **Save Searches as a Web Feed (RSS)** helps users to stay current on new items added to the catalog.



*SirsiDynix Enterprise 3.0 leads the way with fuzzy logic search, mobile browsing, social networking capabilities, multiple source searching, Consortia Support and integrated reporting.*



*Leading-edge faceted search*

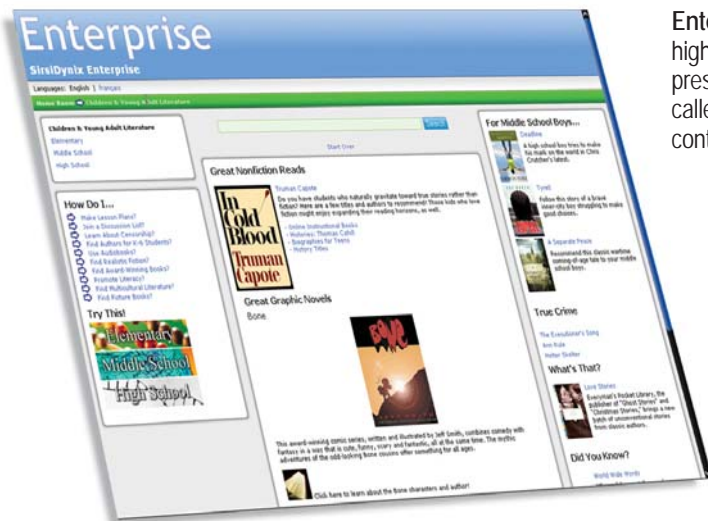
*Give your users:*

- A next-generation user experience
- Accurate results despite misspellings or prefix/suffix mistakes
- Aids to make discovery easy
- Multiple languages
- An easy-to-use and easy-to-navigate look and feel

*Give yourself:*

- Easy integration with your SirsiDynix OPAC
- Built-in consortia support
- Quick and efficient search index updates
- Flexible configuration with your look-and-feel
- Easy management





Enterprise Guided Discovery allows the library to organize high-quality content according to subject areas and present the information to the user in virtual spaces called "Rooms." All of the content (websites, PDFs, subscription content, catalog) within the Room is indexed and searchable.

Intelligent search indexing is based on changes to the catalog rather than a complete catalog dump on a nightly basis.

## Additional Enterprise Highlights

- **Enriched Content** offers cover images for books, DVDs and CDs, table of contents, reviews, annotations, excerpts, fiction profiles, series, awards, and the ability for users to find similar titles.
- **Integration with Existing Environments** provides a clean OPAC integration and a direct interface to SirsiDynix Symphony, Horizon, and Unicorn, for high-performance indexing of relevant SirsiDynix MARC data and item information.
- **Complete Holdings Information** displays the call number, library, material type, and more.
- **Multilingual Support** allows users to change languages on-the-fly and to display search results using Roman and non-Roman character sets.
- **Consortia Support** provides support for any size library or consortium with configuration options for specific library profiles (such as branches or groups of libraries), or different patron groups (like kids, teens, or Spanish speaking patrons). Each profile can support multiple languages, a unique look-and-feel, patron-selectable or administrator-enforced search limits, and can be reached through a unique URL configured by the library.
- **Accessibility Compliance** ensures that the SirsiDynix Enterprise user interface complies with all Priority 1 and Priority 2 Checkpoints from the W3C's Accessibility Guidelines.

## Great tools for efficiently managing modern capabilities!

A "What You See Is What You Get" (WYSIWYG) Editor makes administering Enterprise content a snap! The editor can format the data on the page to create and edit fonts, colors, images external links, and more.



Preview and undo options are available in the staff editor. For staff who would rather use an HTML editor, Enterprise accepts direct HTML input.

Images or other files can be uploaded to the server through the administration interface.

Bringing Knowledge to Life.



www.sirsidynix.com

1.800.288.8020

sales@sirsidynix.com